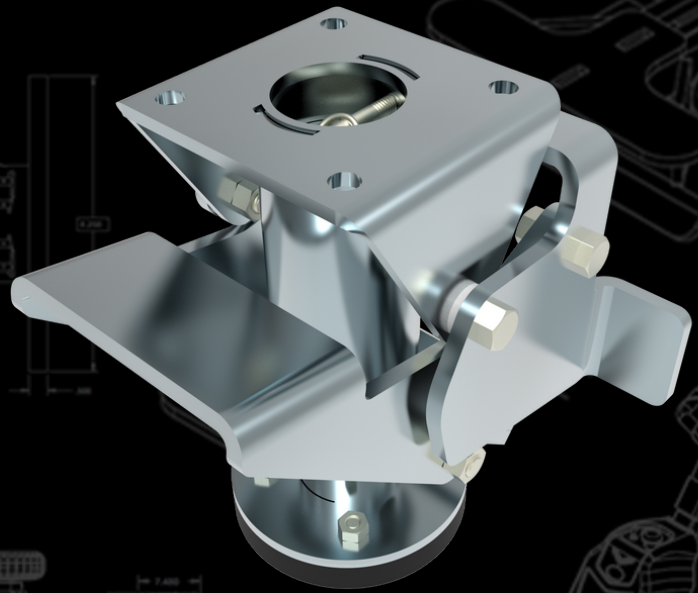


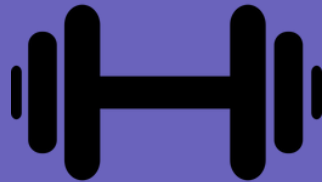
# FLOOR LOCK

Heavy Duty Design

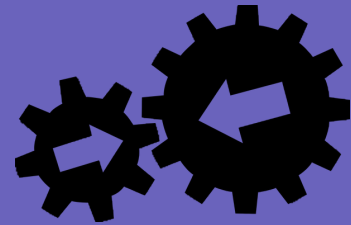
7.5" & 9.5" Size Options  
Are Available



**Foot Actuated**  
Lock/Unlock



**Heavy-Duty**  
Zinc Plated Steel



**Any Cart**  
Add-on

PRODUCT OPTIONS	9.5" / 7.5"
MATERIAL	Zinc Plated Steel
TARE WEIGHT	8.9 / 6.0 lbs
EXTENDED HEIGHT	9.5" / 7.5"
RETRACTED HEIGHT	7.4" / 6.5"
GROUND CLEARANCE	2.1" / 1.0"
PEDAL WIDTH	4.4" / 2.7"

Jtec's heavy-duty zinc-plated steel floor lock is unmatched in the industry. The floor lock is easily bolted on and offers 2" of clearance in the up position. We offer a 9.5" and a 7.5" size option. The serviceable urethane traction pad compresses when engaged and holds your cart in place. This add-on increases safety, and productivity, and reduces cost.



SCAN ME

