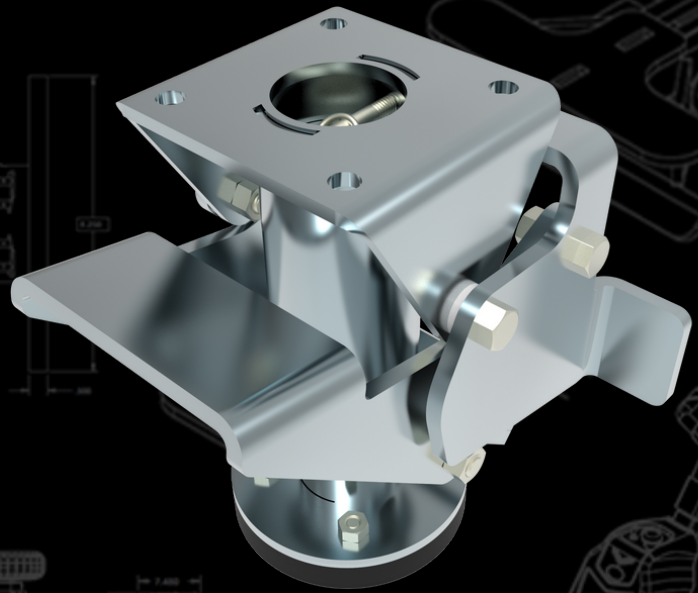


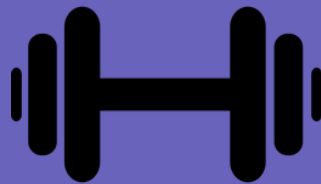
FLOOR LOCK

Heavy Duty Design

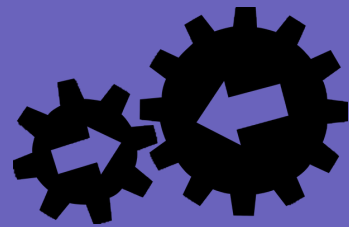
Urethane Traction
Pad Compress



Foot Actuated
Lock/Unlock



Heavy-Duty
Zinc Plated Steel



Any Cart
Add-on

MODEL NUMBER	Floor Lock
TARE WEIGHT	8.9 lbs
MATERIAL	Zinc Plated Steel
EXTENDED HEIGHT	9.5"
RETRACTED HEIGHT	7.4"
GROUND CLEARANCE	2.2"
PEDAL WIDTH	4.4"

Jtec's heavy-duty zinc-plated steel floor lock is unmatched in the industry. The floor lock is easily bolted on and offers 2" of clearance in the up position. The serviceable urethane traction pad compresses when engaged and holds your cart in place. This add-on increases safety, productivity, and reduces cost.

