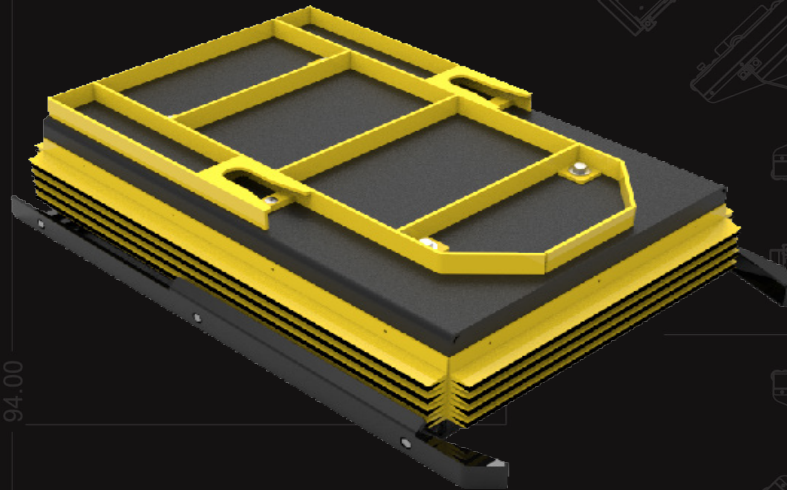


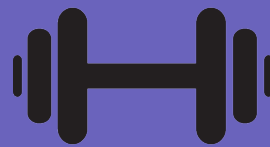
LA-20/40

PUCK SYSTEM

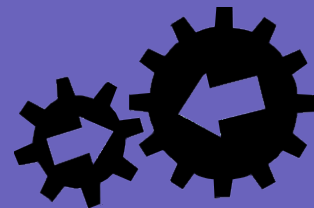
Hydraulic Power Up And Gravity Down Actuation



24" x 36"
 Platform Space



2K/4K lbs
 Weight Capacity



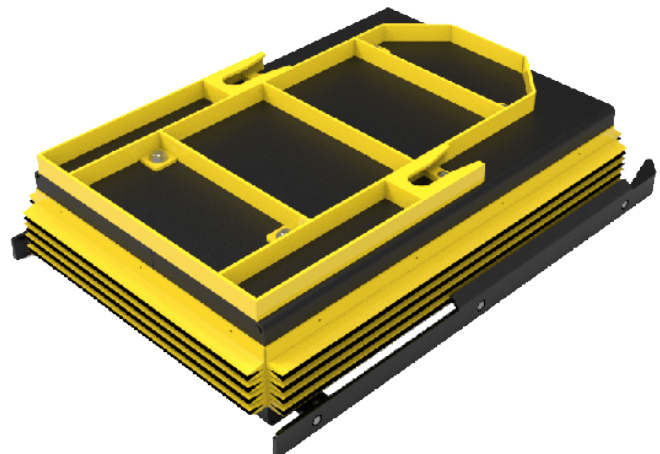
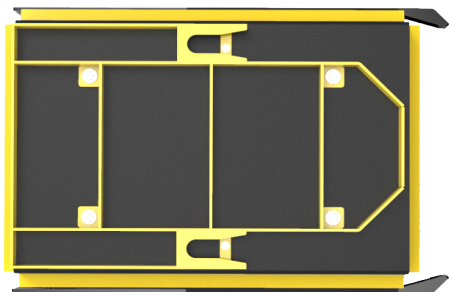
"A & B"
 CarryMore Compatible

MODEL NUMBER	LA-20/40
TARE WEIGHT	679 lbs
LIFT CAPACITY OPTIONS	2,000 & 4,000 lbs
APPROX. ELEVATING TIME	14 Seconds
POWER VAC	115
HEIGHT FULLY COLLAPSED	10"
HEIGHT FULLY LIFTED	32"
TABLE FINISH	Black Enamel

Jtec's lift table has a vertical travel of 22" and is 10" off the ground fully collapsed. This platform has a 2,000 & 4,000 lbs capacity option that can be controlled with foot pedals or a hand pendent.

Compatible Carts include:

- RAFF-5050-40
- RARC-5050-20
- RATT-5050-25
- RBFF-5050-25
- RBRC-3333-20
- RBTT-5050-25
- RBFF-3434-25



SCAN ME