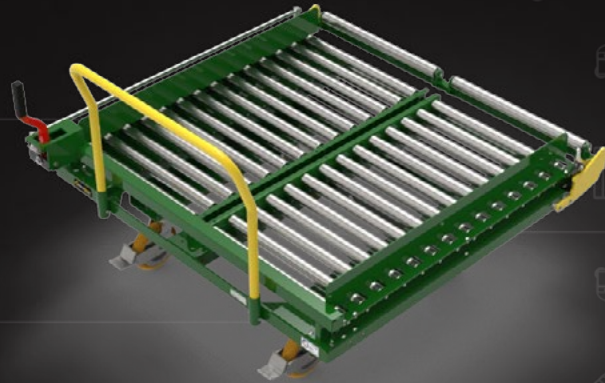




# RARC-5050-20

## DAUGHTER CART

Mechanical Roller Cart for Easy Bulk Transfer



**50" x 50"**  
usable deck space



**2,000 LB**  
weight capacity



**"A" SIZE**  
carrymore compatible

MODEL NUMBER	RARC-5050-20
TARE WEIGHT	293 lbs
CAPACITY	2,000 lbs
STEERING	Rear
ELEMATE	1.0
HANDLE	38"
DECK HEIGHT	13"
CASTER PACKAGE	2 rigid/ 2 swivel



Powder Coat Finish Options

This daughter cart supports easy bulk transfer of materials with the use of a roller deck. The "Gear Shift" style drop gate offers secure transport to and from lines.

This cart features 1.9" diameter conveyer rollers and is compatible with 48" x 45" bulk boxes or pallets.

Additional features include:

- MoveMore-40 Compatible
- Removable Ergo Handle
- Powder Coat Finish
- Corner Captures
- Premium Apex Caster Package with Alumilock Brakes



SCAN ME

